

**Education Directorate**

**Pupil Development Grant**

**Education Scrutiny Performance Panel  
18 March 2021**

**Cyfarwyddiaeth Addysg**

**Grant Datblygu Disgyblion**

**Panel Perfformiad Craffu - Addysg  
18 Mawrth 2021**



**Cyngor Abertawe**  
**Swansea Council**

# Argymhellion y Cabinet

## Cabinet recommendations

- Mai 2019 - Argymhellion a gefnogir gan y Pwyllgor Datblygu Polisi ynghylch y defnydd o'r Grant Datblygu Disgyblion (GDD) yn Abertawe.
- Mae ymweliadau cefnogi tymor yr hydref yn ystyried cynlluniau GDD ysgolion fel rhan o broses.
- May 2019 Policy Development Committee supported recommendations regarding Pupil Development Grant (PDG) use in Swansea.
- Autumn term support visits consider school PDG plans as part of process.

- Senior staff responsible for implementation of PDG plans.
- PDG plans aim to optimise the progress of all pupils eligible for free school meals (eFSM) – including more able and looked after pupils.
- Plans outline actions and link with school strategic plans.
- Pupil progress is tracked – helps when evaluating effectiveness of actions.
- Uwch-staff sy'n gyfrifol am roi cynlluniau'r GDD ar waith.
- Nod cynlluniau ar gyfer y GDD yw mwyafu cynnydd yr holl ddisgyblion sy'n gymwys ar gyfer prydau ysgol am ddim (cPYDd) - gan gynnwys disgyblion mwy talentog a'r rheini sy'n derbyn gofal.
- Mae'r cynlluniau'n amlinellu camau gweithredu ac yn cysylltu â chynlluniau strategol yr ysgol.
- Caiff cynnydd disgyblion ei olrhain - mae'n helpu wrth werthuso effeithiolrwydd camau gweithredu.

PDG summary of spend to support vulnerable pupils (*Annual item*)

Crynodeb o wariant y GDD i gefnogi disgyblion diamddiffyn (*eitem flynyddol*)

## **Totals 20-21**

### **(Swansea Primary Schools)**

- £5,644,200
- Primary average: £73K
- Primary lowest: £3,450
- Primary highest: £207K

## **Cyfansymiau 20-21**

### **(Ysgolion Cynradd Abertawe)**

- £5,644,200
- Cyfartaledd - Cynradd: £73K
- Isaf - Cynradd: £3,450
- Uchaf - Cynradd: £207K

PDG summary of spend to support vulnerable pupils (*Annual item*)

Crynodeb o wariant y GDD i gefnogi disgyblion diamddiffyn (*eitem flynyddol*)

### **Totals 20-21**

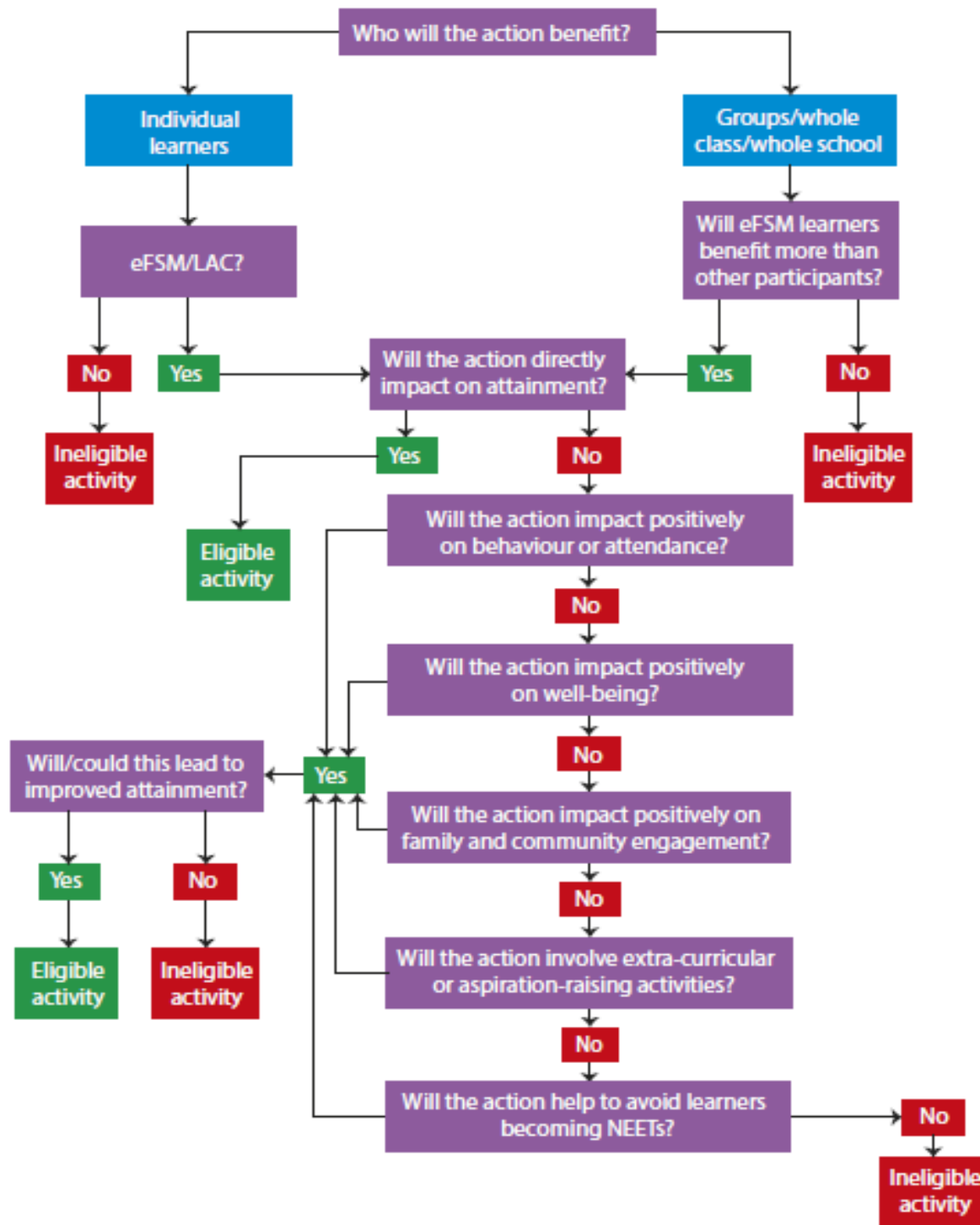
#### **(Swansea Secondary & Special Schools)**

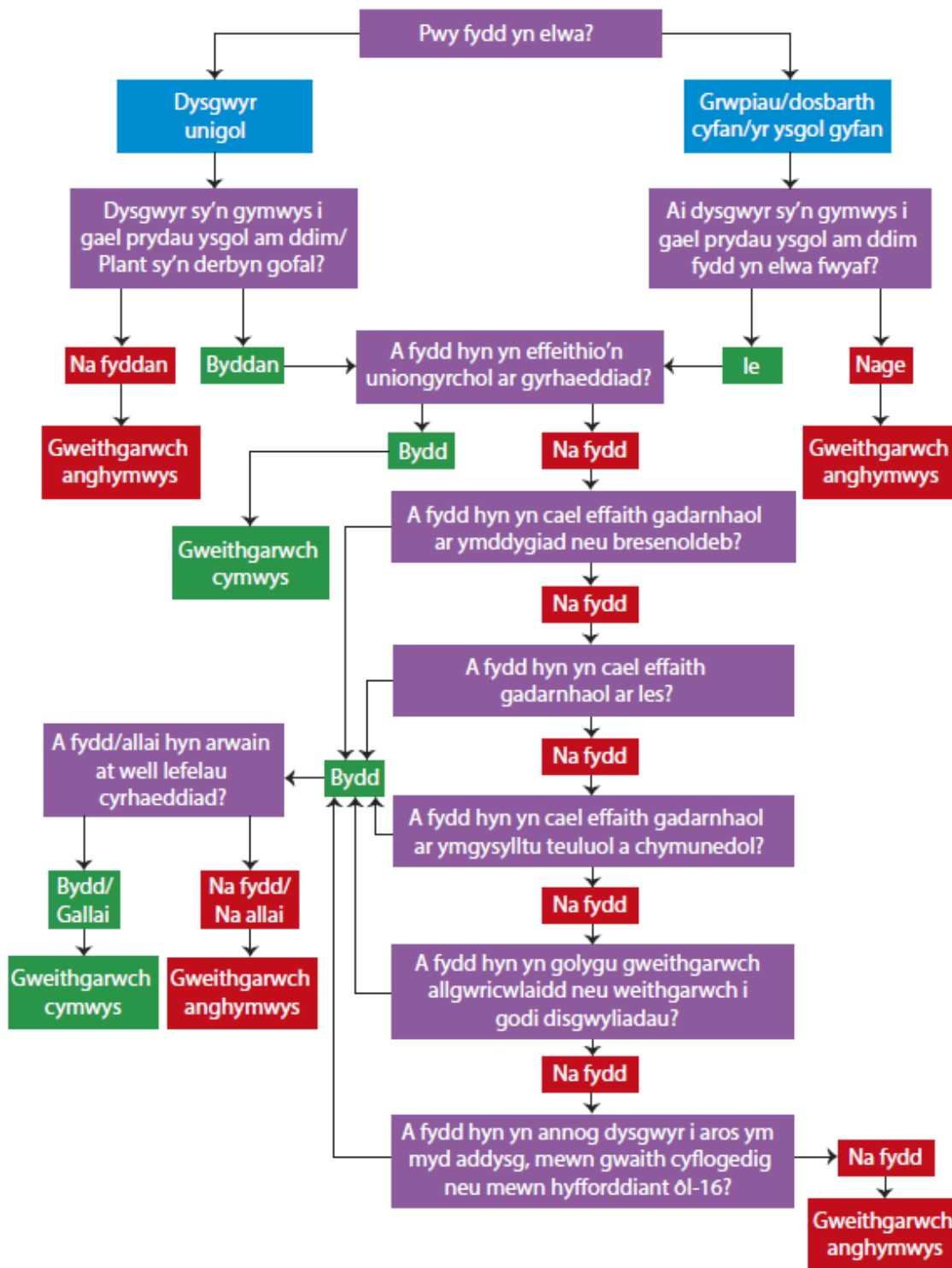
- £2,748,500
- Secondary average: £196K
- Secondary lowest: £52K
- Secondary highest: £348K
- Total Swansea Special:
- £70,150
- Special average: £35K

### **Cyfansymiau 20-21**

#### **(Ysgolion Uwchradd ac Ysgolion Arbennig Abertawe)**

- £2,748,500
- Cyfartaledd Uwchradd: £196K
- Isaf - Uwchradd: £52K
- Uchaf - Uwchradd: £348K
- Cyfanswm Ysgolion Arbennig:
- £70,150
- Cyfartaledd Ysg. Arbennig: £35K





# Examples of spend

## Enghreifftiau o wariant

- Examples of its use in Swansea:
  - reading eggs
  - maths seeds
  - toe-by-toe
  - self-esteem (THRIVE, Empathy Lab etc.)
  - supporting mental health
- Enghreifftiau o'i ddefnydd yn Abertawe:
  - *Reading Eggs*
  - *Maths seeds*
  - *Toe-by-toe*
  - Hunan-barch (THRIVE, Labordy Empathi etc.)
  - Cefnogi iechyd meddwl



- Training for staff (TAs and teachers), such as:
- Speech and language
- Well-being training
- Wellcomm
- Developing teaching, e.g. Hattie's 'visible learning'
- Trauma informed
- Behaviour strategies
- Attachment
- Hyfforddiant i staff (CA ac athrawon), fel:
- Iaith a Lleferydd
- Hyfforddiant Iles
- Wellcomm
- Datblygu addysgu e.e. 'Dysgu gweledol' Hattie
- Arferion a Hysbysir gan Drawma
- Strategaethau ymddygiad
- Ymlyniad

- Developing tracking systems
- Freeing key staff to work with families and other agencies (TAF).
- Employing staff to support families
- Implementing Wellcomm
- Implementing well-being and mental health programmes
- Implementing speech and language programmes
- Implement catch-up programmes
- Increase staffing ratios in the early years
- Datblygu systemau olrhain
- Rhyddhau staff i weithio gyda theuluoedd ac asiantaethau eraill (TAT)
- Cyflogi staff i gefnogi teuluoedd
- Rhoi Wellcomm ar waith
- Rhoi rhaglenni lles ac iechyd meddwl ar waith
- Rhoi rhaglenni iaith a lleferydd ar waith
- Rhoi rhaglenni dal i fyny ar waith
- Cynyddu cymarebau staffio yn y blynyddoedd cynnar

- Provide enrichment and after school provision
- Enabling Nursery pupils to attend breakfast club
- Homework club for parents and pupils twice weekly
- Computer skills course for parents
- Creation of well-being rooms
- Supporting MAT pupils eFSM (maths & English)
- Nurture lunchtime clubs
- Purchasing of online packages (maths, literacy/reading – language link & MyConcern)
- Art therapy
- Darparu gweithgareddau cyfoethogi a darpariaeth ar ôl ysgol
- Galluogi disgyblion y meithrin i fynd i'r clwb brecwast
- Clwb gwaith cartref i rieni a disgyblion ddwywaith yr wythnos
- Cwrs sgiliau cyfrifiadur i rieni
- Creu ystafelloedd lles
- Cefnogi disgyblion MAT cPYDd (Mathemateg a Saesneg)
- Clybiau anogaeth amser cinio
- Prynu pecynnau ar-lein (Mathemateg, Llythrennedd/darllen - language link a MyConcern)
- Therapi celf

# Supporting families

## Cefnogi teuluoedd

- Paying for school snack
- Pay for childcare (after-school club)
- Pay for school trips
- Purchase of IT equipment to support blended learning
- Talu am fyrbrydau ysgol
- Talu am ofal plant (clwb ar ôl ysgol)
- Talu am wibdeithiau ysgol
- Prynu offer TG i gefnogi dysgu cyfunol

# Impact Effaith

- Improved engagement
- Fewer social services referrals
- Improved attendance
- Improved attainment
- Improved teaching
- Improved parents' skills and relationship with school
- Gwell ymrwymiad
- Llai o atgyfeiriadau i'r Gwasanaethau Cymdeithasol
- Gwell presenoldeb
- Gwell cyrhaeddiad
- Gwell addysgu
- Sgiliau rhieni a'u perthynas â'r ysgol yn well

# What do Welsh Government and Estyn say? Beth mae Llywodraeth Cymru ac Estyn yn ei ddweud?

 **Estyn**

estyn.llyw.cymru  
estyn.gov.wales

---

**Effective school support  
for disadvantaged and  
vulnerable pupils – case  
studies of good practice**

February 2020



Canllawiau ar gyfer defnyddio'r  
Grant Amddifadedd Disgyblion

**Beth sydd  
wir yn  
gweithio?**

  
Llywodraeth Cymru  
Welsh Government  
[www.cymru.gov.uk](http://www.cymru.gov.uk)

Bwriad y canllawiau hyn yw rhoi cyngor ymarferol i ysgolion ar y ffordd orau o ddefnyddio eu Grant Amddifadedd Disgyblion. Mae'n ategu'r canllawiau i ymarferwyr a gyhoeddwyd ym mis Rhagfyr 2013 ar y Grant Amddifadedd Disgyblion 2013–2015.



# What is NOT as successful? Beth NAD yw mor llwyddiannus?

- Simply employing additional Teaching Assistants (TAs) - except where teachers and TAs work effectively together
- Ability grouping
- Reducing primary class sizes (aside from Reception and Y1 when reduced below 15)
- Teacher performance-related pay
- Cyflogi rhagor o Gynorthwyr Addysgu (CA) - ac eithrio lle mae athrawon a CA yn gweithio'n effeithiol gyda'i gilydd
- Grwpio yn ôl gallu
- Lleihau dosbarthiadau cynradd (heblaw am y dosbarth Derbyn a BI1 pan fo'r nifer yn llai na 15)
- Tâl yn seiliedig ar berfformiad i athrawon

# Welsh Government top 4: 4 pennaf Llywodraeth Cymru:

1. Effective feedback on learning
2. Metacognition and self-regulation
3. Peer tutoring
4. Early intervention

1. Adborth effeithiol ar ddysgu
2. Metawybyddiaeth a hunan-reoli
3. Hyfforddiant gan gyfoedion
4. Ymyrryd yn gynnar



# Estyn top 10

Top 10 Strategies for tackling poverty and disadvantage in schools

- 1 Taking a whole-school, strategic approach to tackling disadvantage
- 2 Using data to track the progress of disadvantaged pupils
- 3 Improving disadvantaged pupils' literacy and learning skills
- 4 Improving the social and emotional skills of disadvantaged pupils
- 5 Improving the attendance, punctuality and behaviour of disadvantaged pupils
- 6 Tailoring the curriculum to meet the needs of disadvantaged pupils
- 7 Providing enriched experiences and a variety of extra-curricular activities and trips
- 8 Listening to pupils and encouraging participation
- 9 Engaging with parents and carers of disadvantaged pupils
- 10 Developing the expertise of staff to meet the needs of disadvantaged pupils

# 10 uchaf Estyn

Y 10 Strategaeth orau ar gyfer mynd i'r afael â thlodi ac anfantais mewn ysgolion

- 1 Defnyddio dull ysgol gyfan, strategol i fynd i'r afael ag anfantais
- 2 Defnyddio data i olrhain cynnydd disgyblion dan anfantais
- 3 Gwella medrau llythrennedd a dysgu disgyblion dan anfantais
- 4 Datblygu medrau cymdeithasol ac emosiynol disgyblion dan anfantais
- 5 Gwella presenoldeb, prydlondeb ac ymddygiad disgyblion dan anfantais
- 6 Teilwra'r cwricwlwm yn unol ag anghenion disgyblion dan anfantais
- 7 Darparu profiadau cyfoethocach ac amrywiaeth o weithgareddau a thripiâu allgyrsiol
- 8 Gwrando ar ddisgyblion dan anfantais a rhoi cyfleoedd iddynt gymryd rhan lawn ym mywyd yr ysgol
- 9 Ymgysylltu â rhieni a gofalwyr disgyblion dan anfantais
- 10 Datblygu arbenigedd staff i fodloni anghenion disgyblion dan anfantais



# In addition...

## Yn ogystal...

- Local Authority receives PDG LAC (looked after children) funding
- £292,756 for 20-21
- Distributed to clusters
- Spend similar to that already given in earlier slides (training, implementing support etc.)
- Mae'r awdurdod lleol yn derbyn cyllid ar gyfer GDD PDG (plant sy'n derbyn gofal)
- £292,756 ar gyfer 20-21
- Fe'i dosberthir i glystyrau
- Mae'r gwariant yn debyg i'r hyn a nodwyd eisoes yn y sleidiau cynharach (hyfforddiant, rhoi cefnogaeth ar waith etc.)

# Finally...

- Innovative and effective use of grant in Swansea.
- Having a positive impact on staff development, well-being, attendance, attainment etc.
- Recommendations realised in Swansea schools.

# Yn olaf...

- Defnydd blaengar ac effeithiol o'r grant yn Abertawe.
- Mae'n cael effaith gadarnhaol ar ddatblygiad staff, lles, presenoldeb, cyrhaeddiad etc.
- Argymhellion wedi'u gwireddu yn ysgolion Abertawe.